



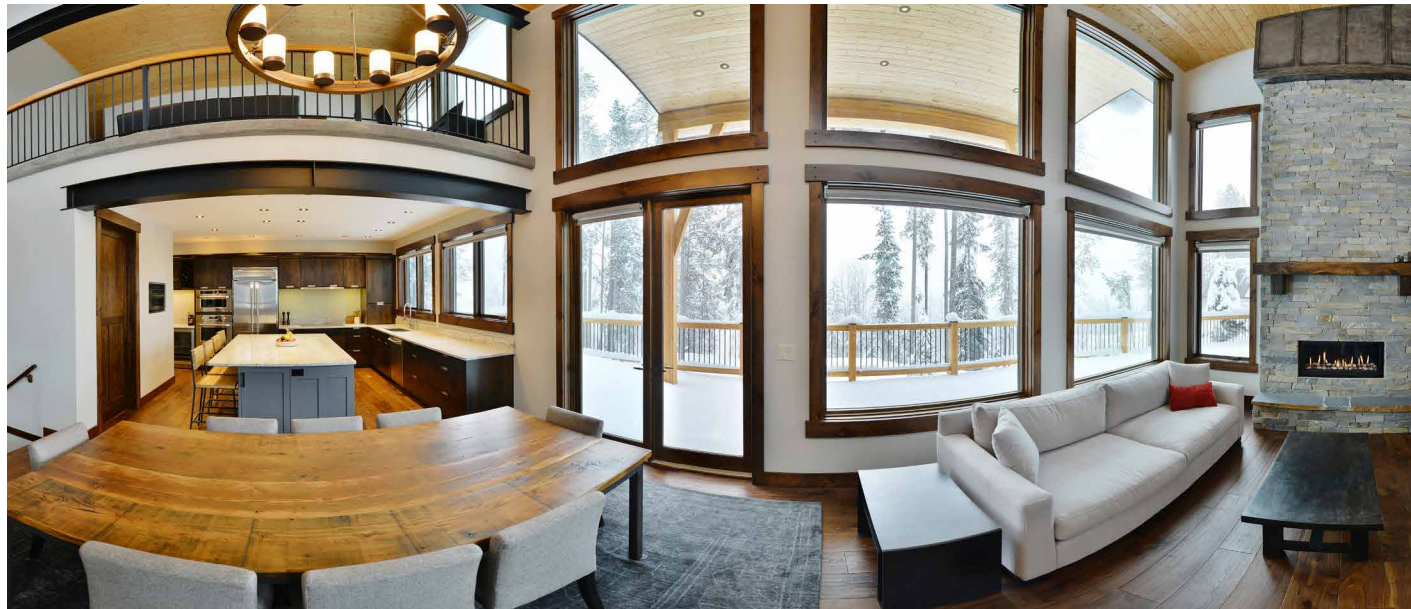


For more than 15 years Tye Homes has built first-class character homes in Western Canada. Tye's development in the last decade has expanded to a growing selection of house lines, from Tye Log & Timber to Tye Flex. Our selection makes it easier for our clients to find the perfect home.

Enter Tye Signature! Perhaps you have explored our selection of home lines and haven't found your dream home. That's okay, our in-house design team will work through your vision to see your dream home fulfilled. From building site to window finishes your house is customized to fit your needs, your style and your location.

Tye Signature is the upper echelon of home building in British Columbia; each Signature home is completely unique to the client. We understand that inspiration comes in many ways, let's look at some examples. In the following pages Tye Signature Homes are laid out for you to see the quality of our work and get inspired.

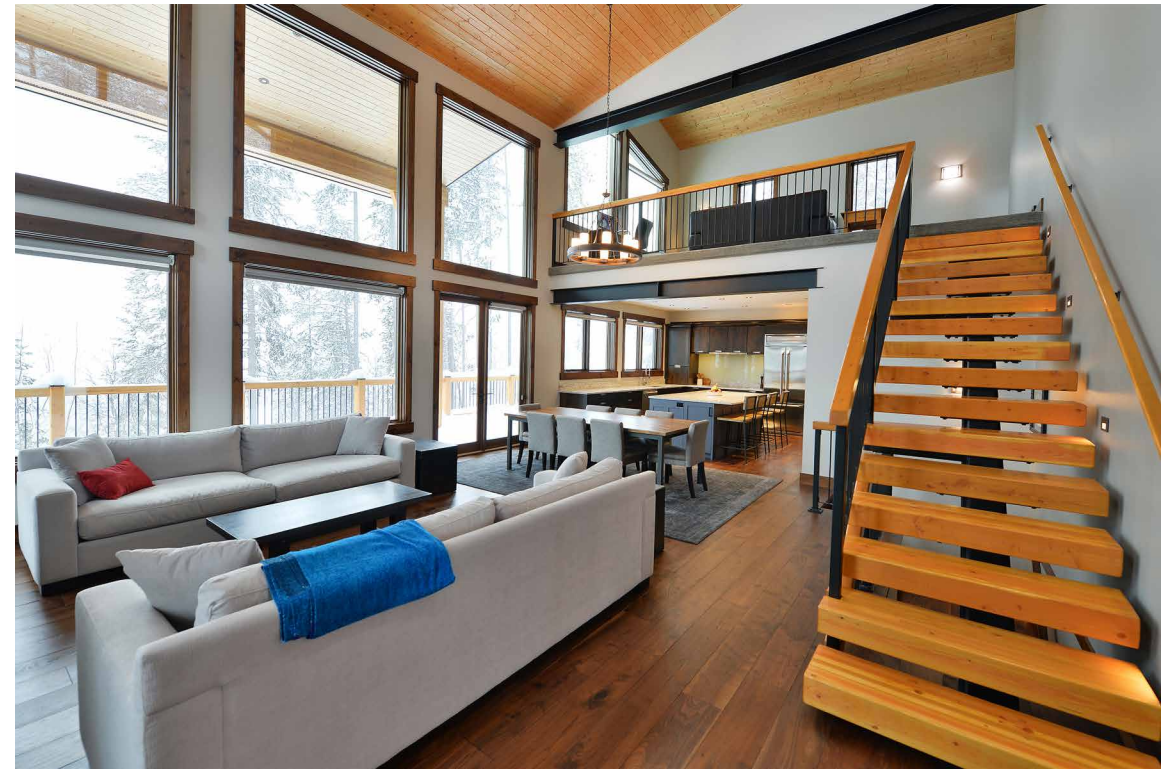
We hope you enjoy and we're excited about working with you.

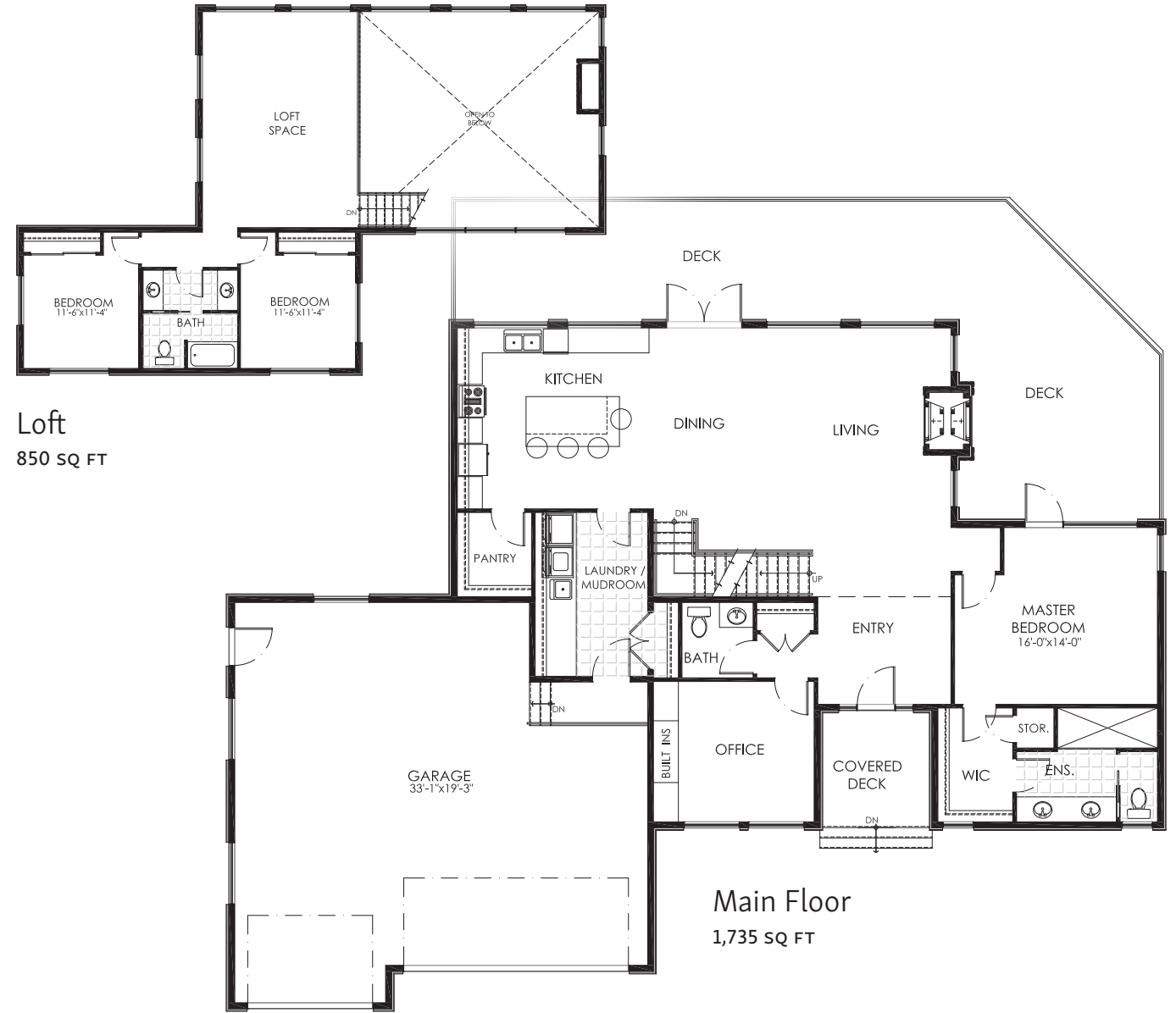




# THE ROSA

2,585 SQ FT, 3 BED, 3 BATH  
*Basement Plan Available*



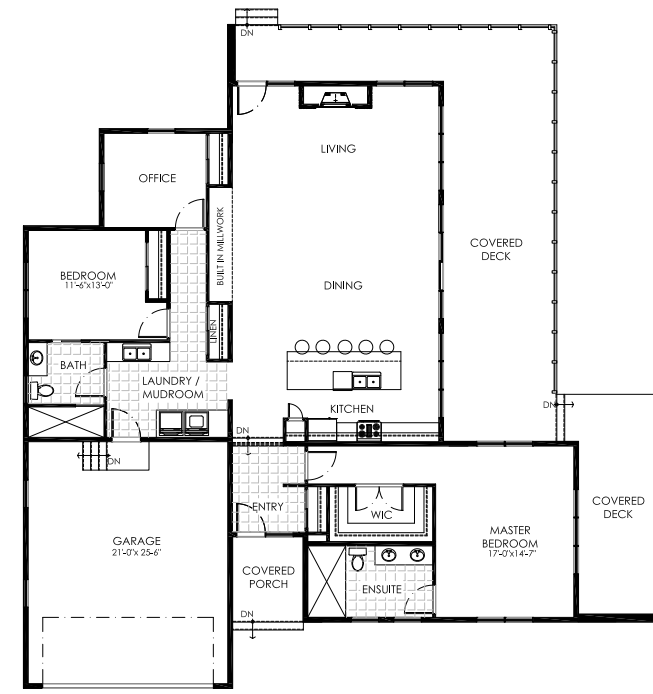


optional basement



# THE AUGUSTA

2,145 SQ FT, 2 BED, 3 BATH  
*Basement Plan Available*

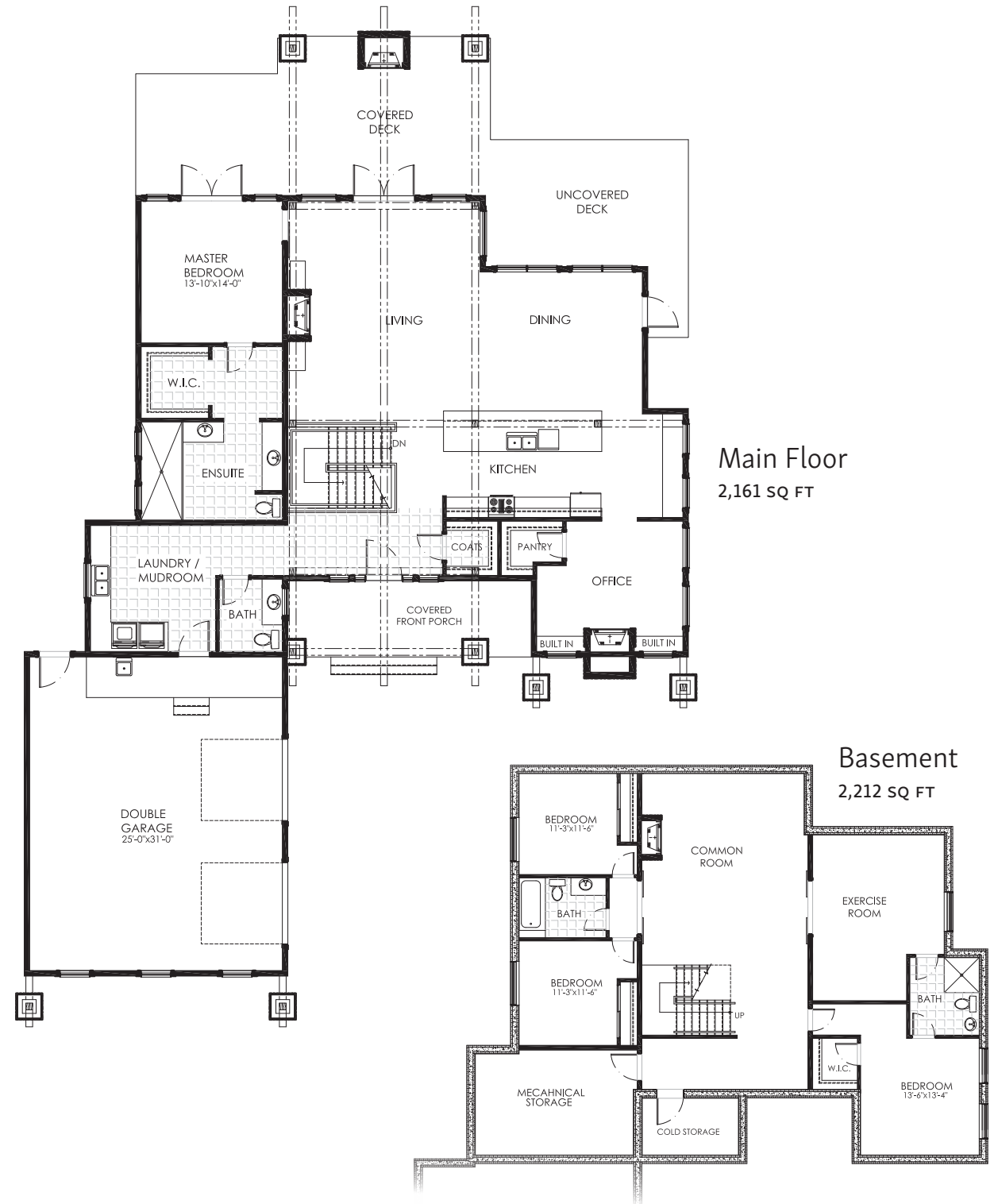




# THE PINE VALLEY

2,161 SQ FT, 1 BED, 2 BATH  
*Optional Basement*



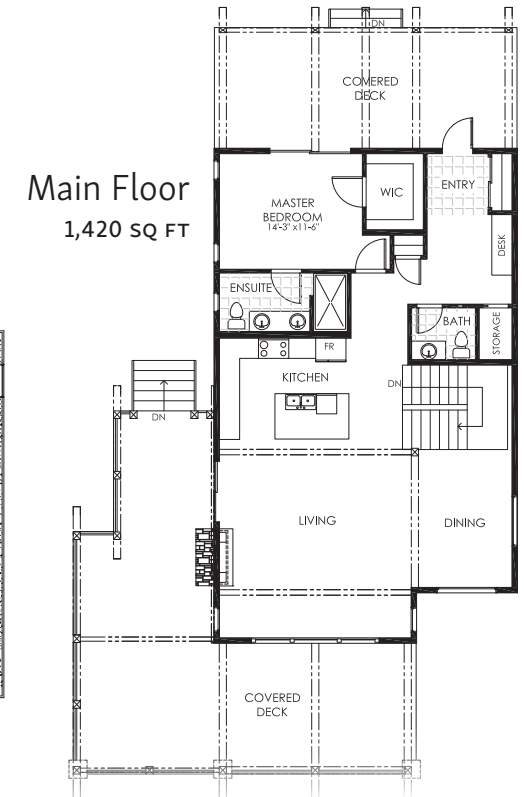
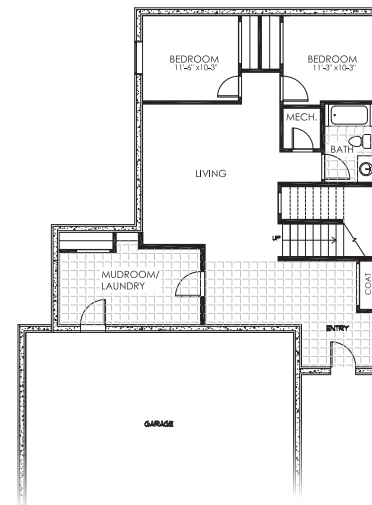




# THE MERION

2,638 SQ FT, 3 BED, 3 BATH

Basement  
1,318 SQ FT







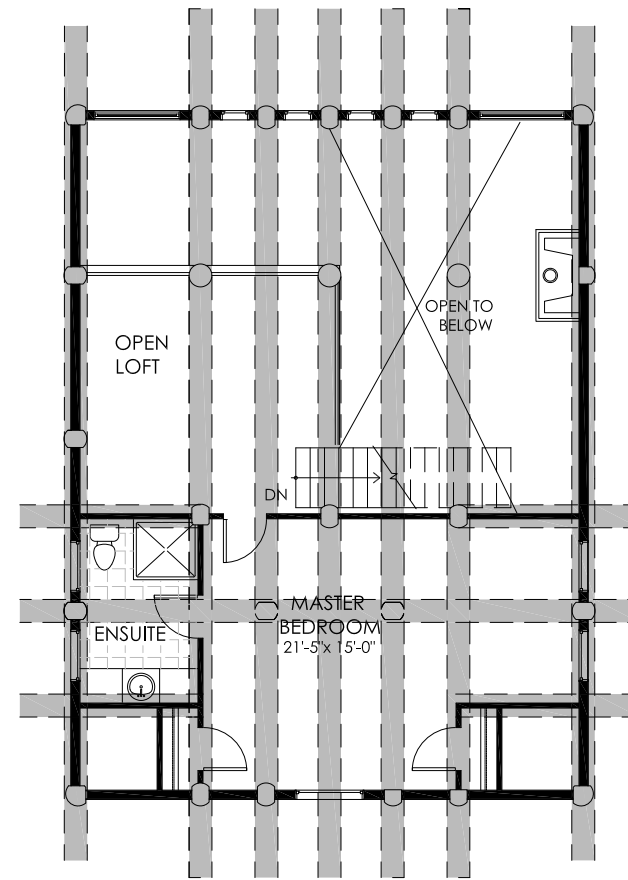
# THE BATTLE RIVER

1,930 SQ FT, 2 BED, 2 BATH  
*Basement Plan Available*

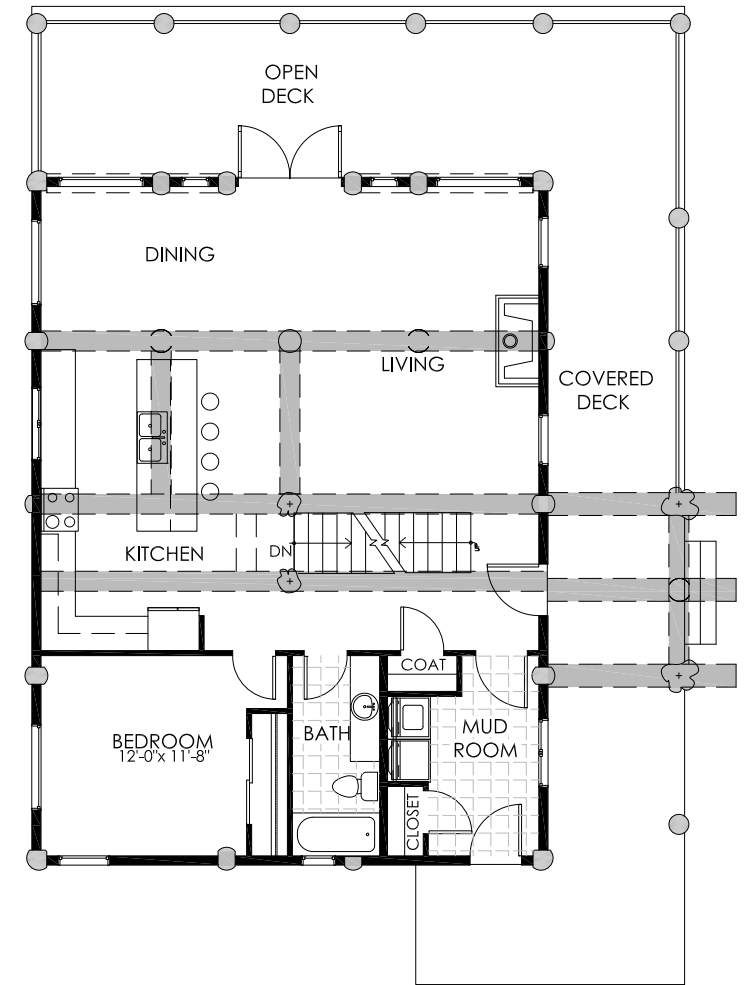




Loft  
725 SQ FT



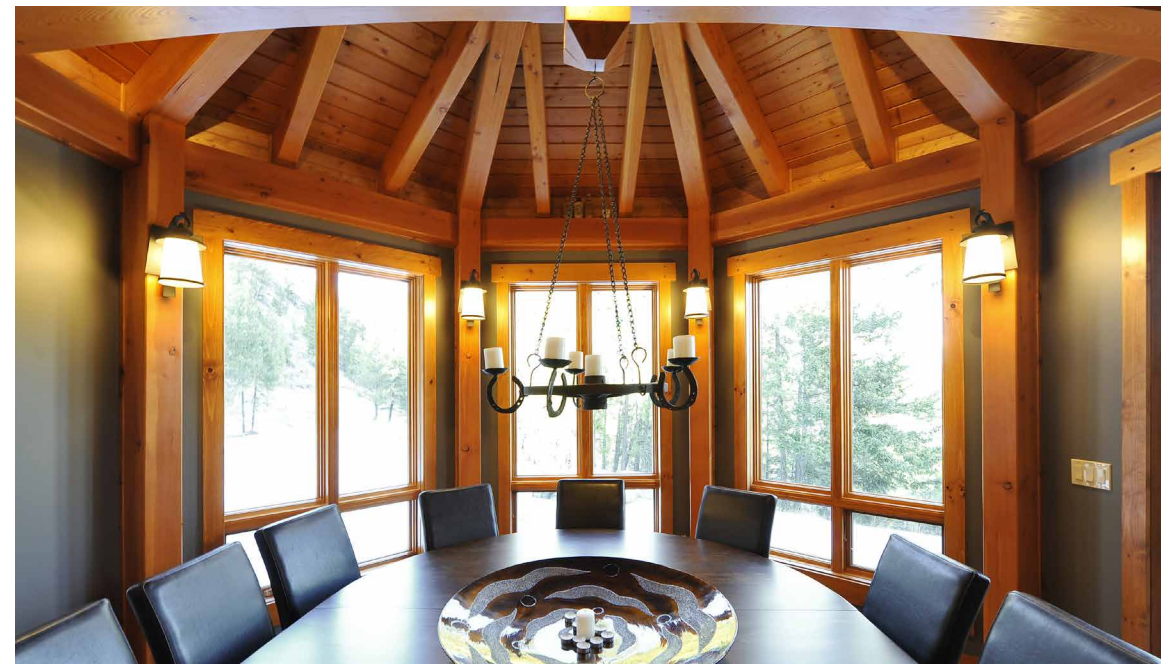
Main Floor  
1,205 SQ FT

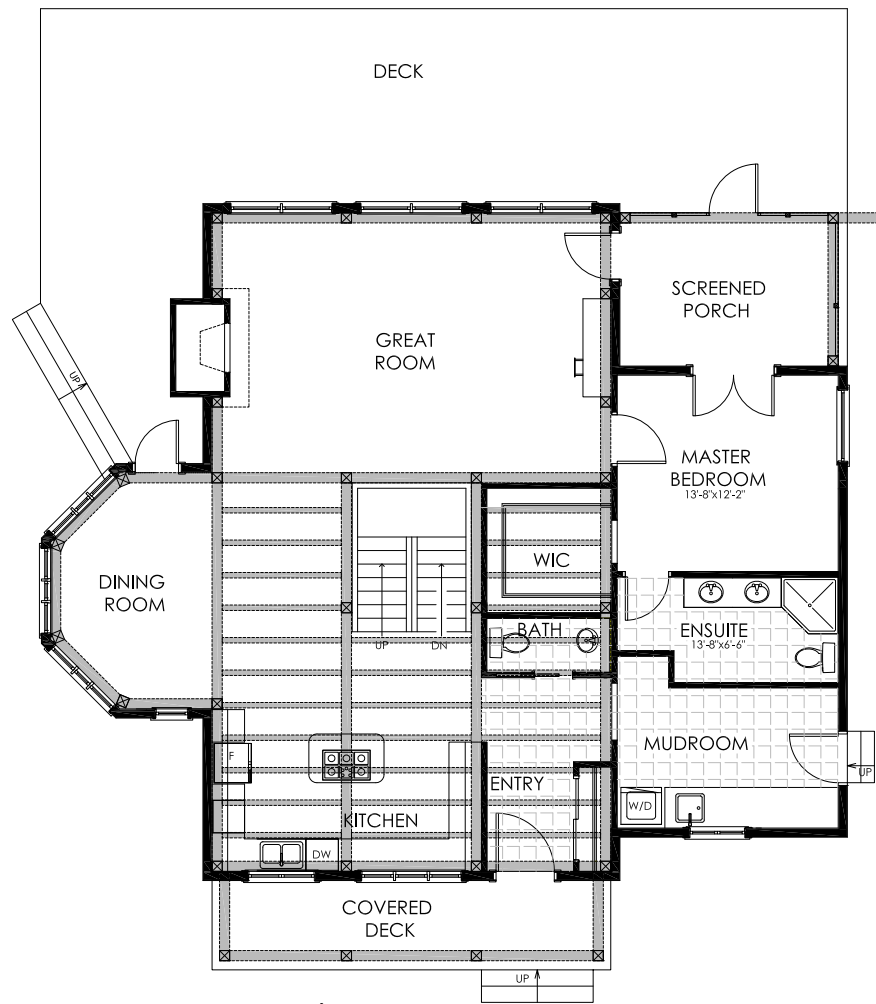




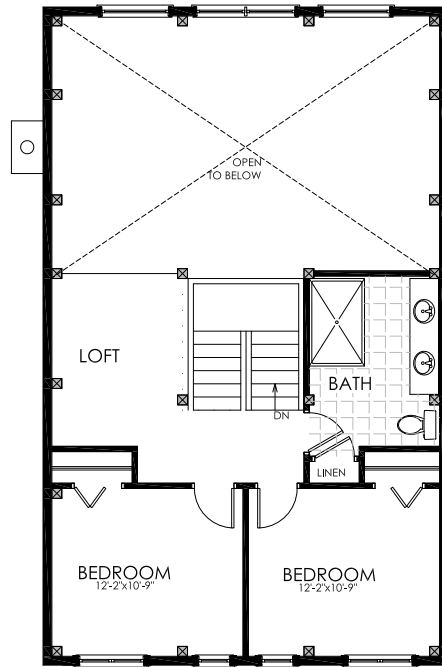
# THE MOUNTAIN ASH

2,235 SQ FT, 3 BED, 3 BATH  
*Basement Plan Available*

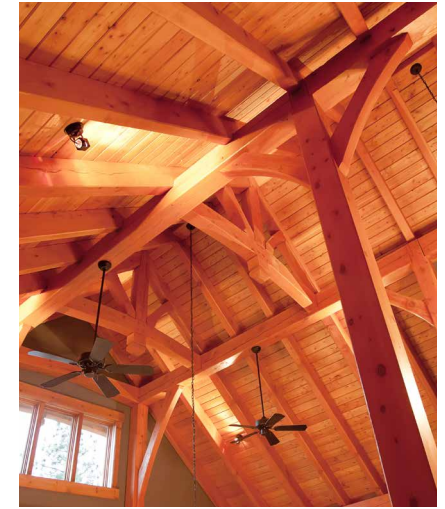




Main Floor  
1,603 SQ FT



Loft  
632 SQ FT

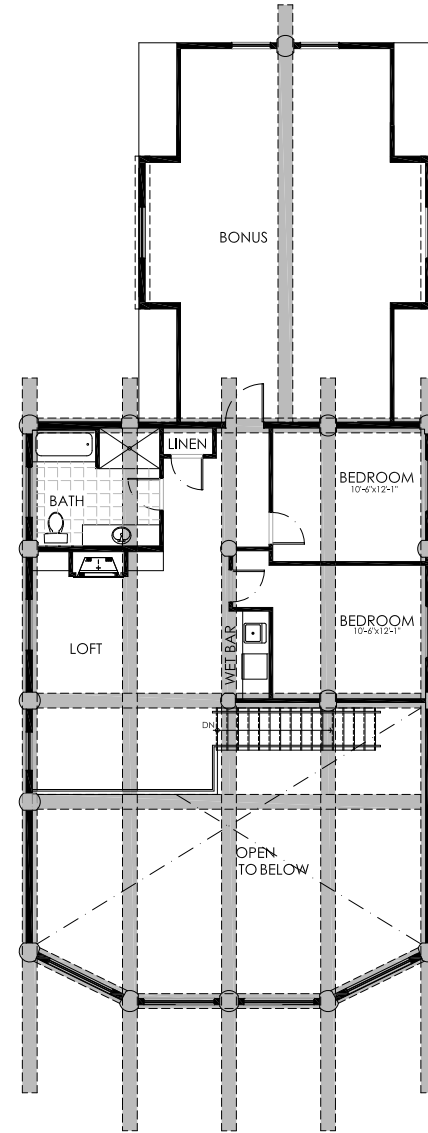
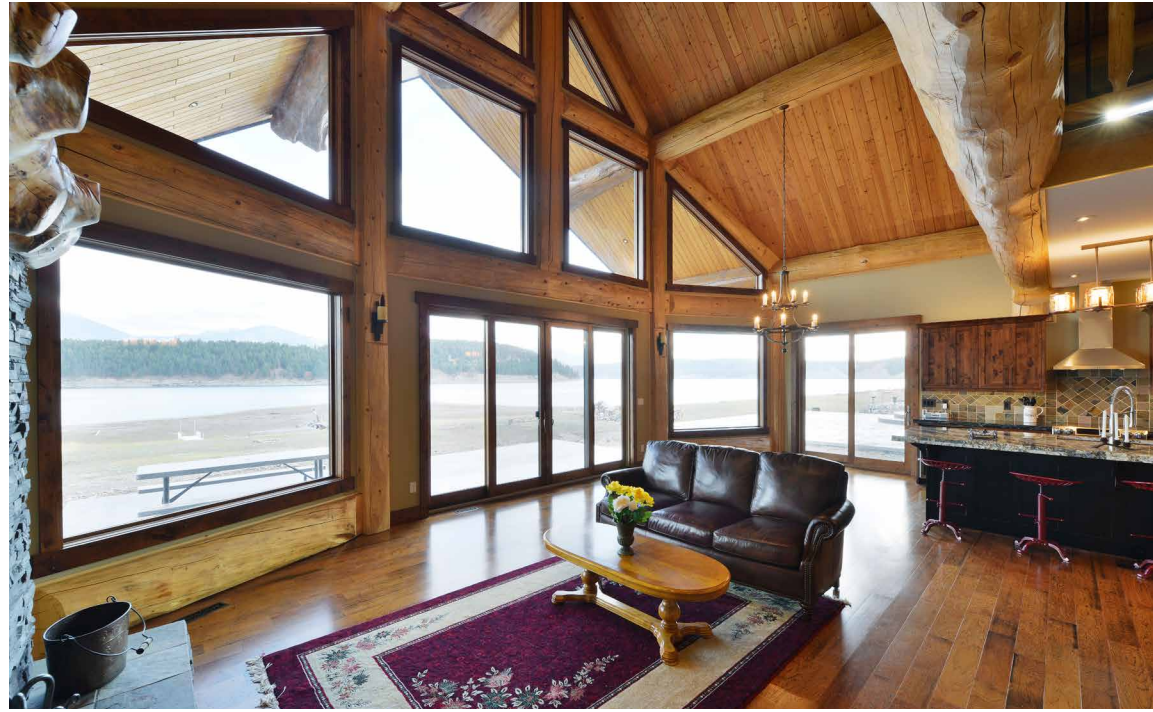




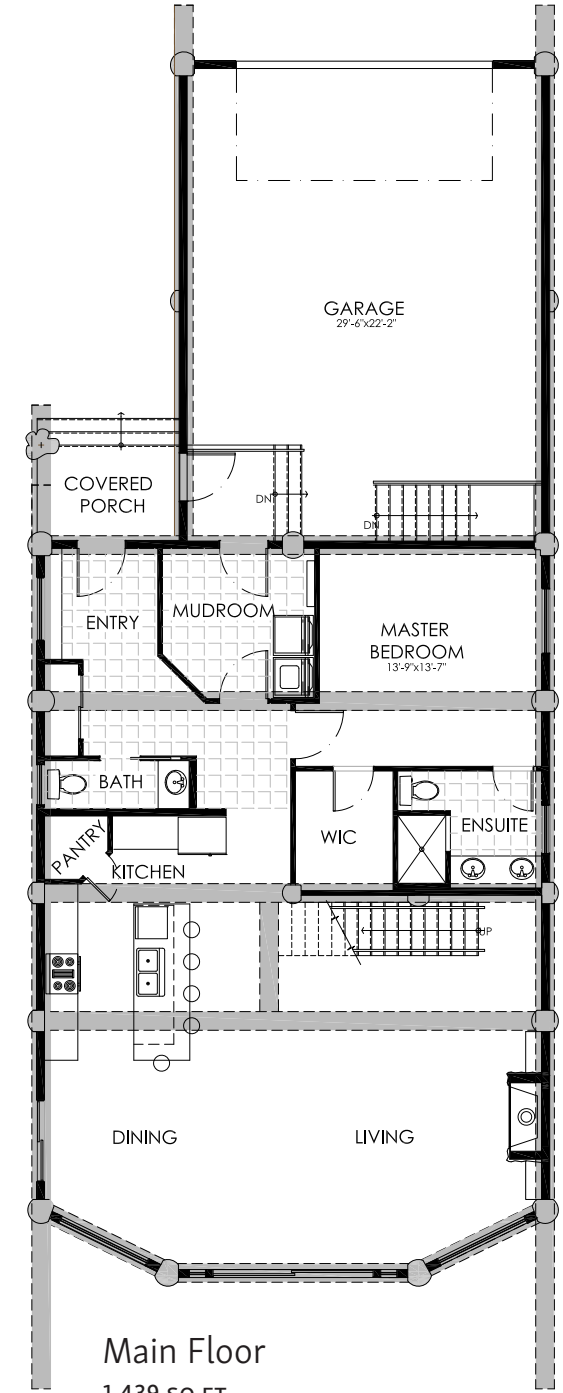
# THE WIGWAM

2,739 SQ FT, 3 BED, 3 BATH  
*Basement Plan Available*





Loft  
1,300 SQ FT



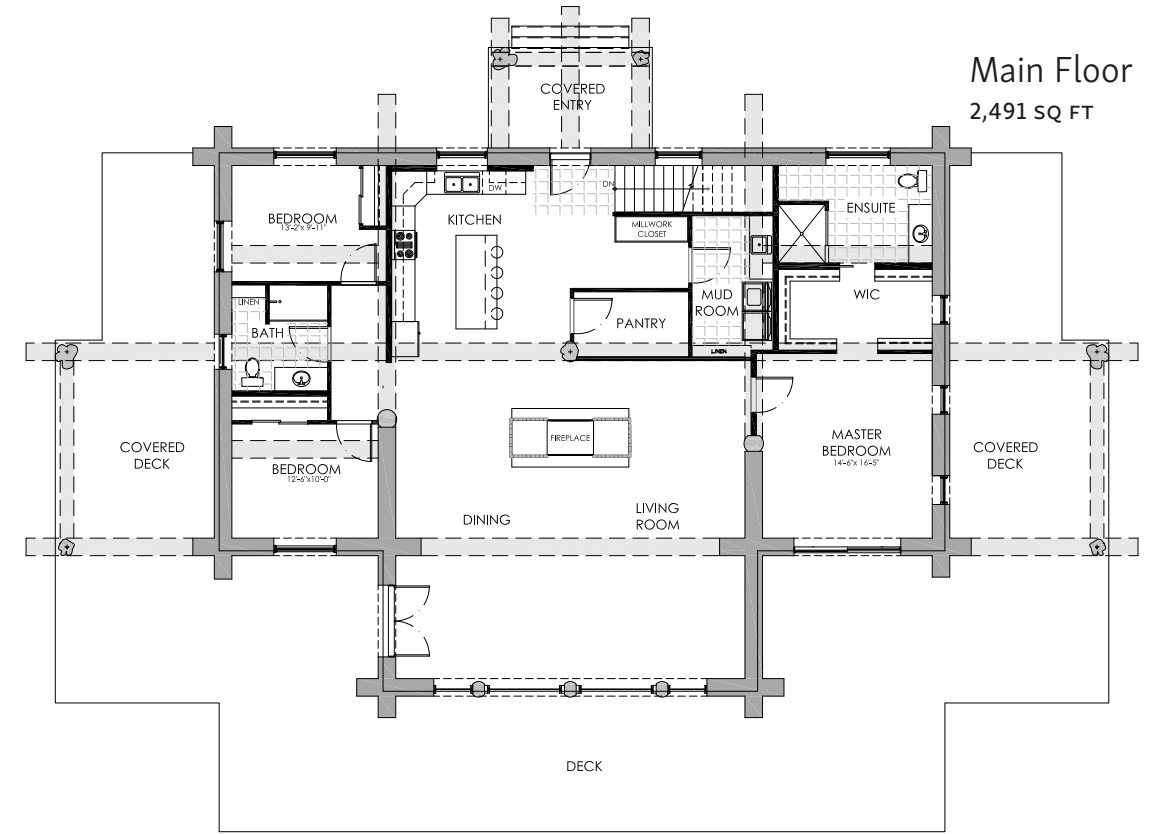
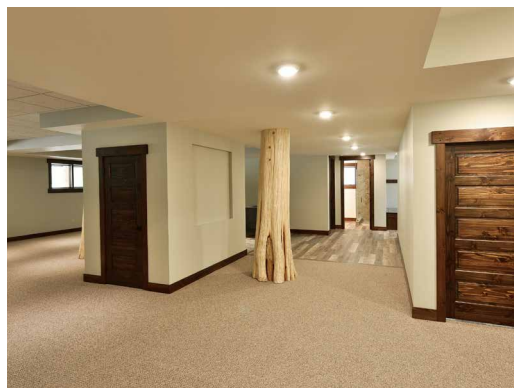
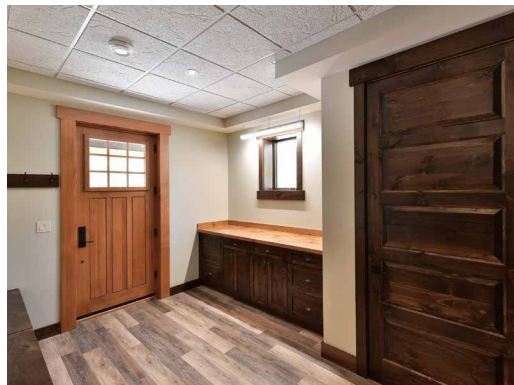
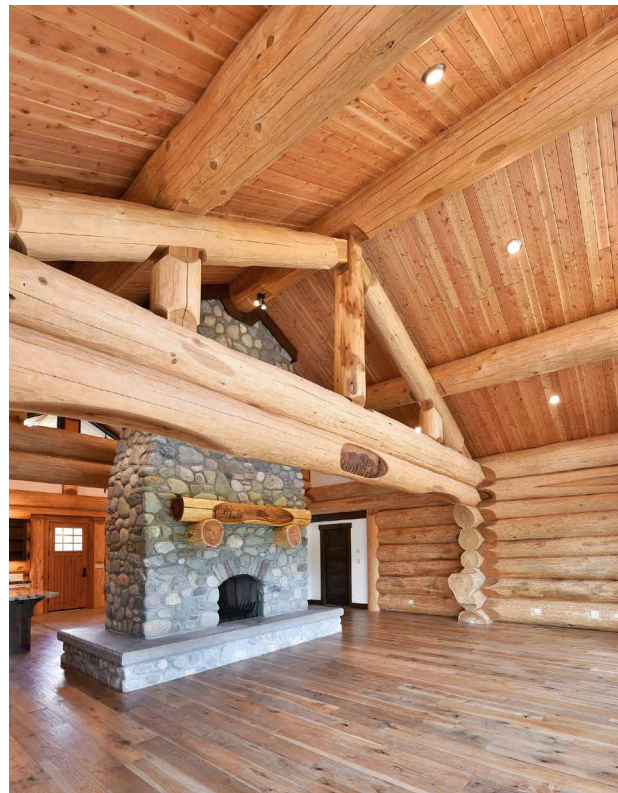
Main Floor  
1,439 SQ FT



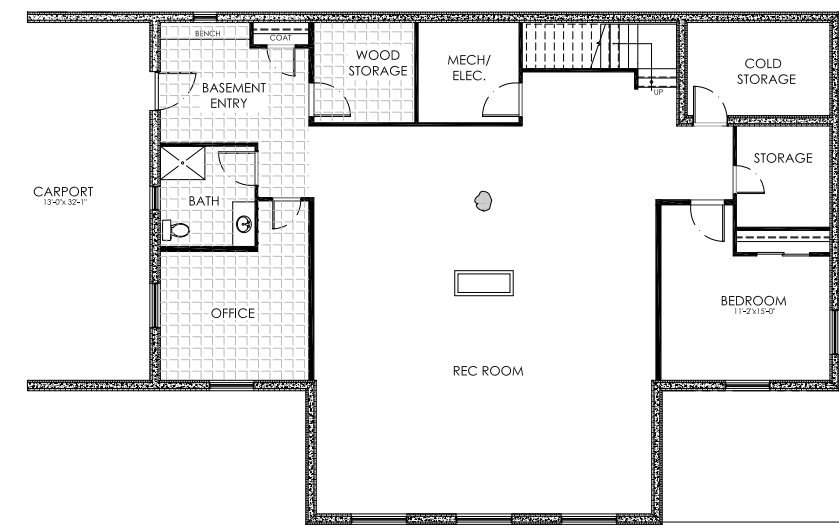
# THE ELKO

2,491 SQ FT, 3 BED, 2 BATH  
*Optional Basement*





Main Floor  
2,491 sq ft



Basement  
2,491 sq ft





SIGNATURE