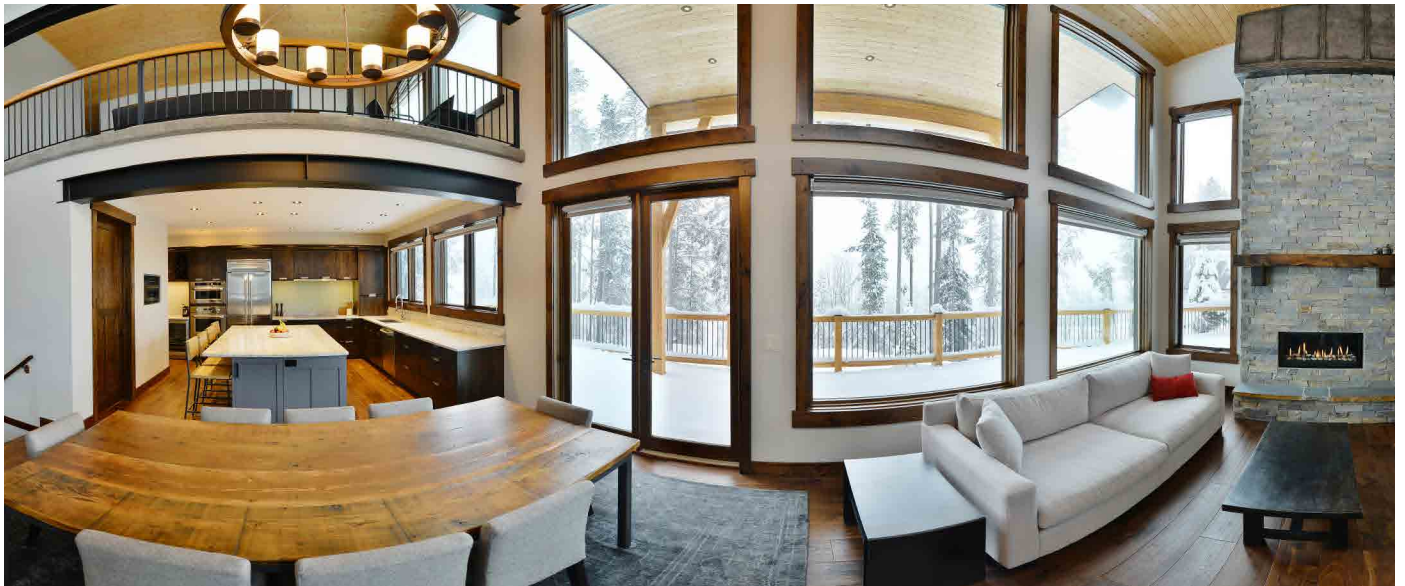


tyee

SIGNATURE







## SIGNATURE

For more than 15 years Tye Homes has built first-class character homes in Western Canada. Tye's development in the last decade has expanded to a growing selection of house lines, from Tye Log & Timber to Tye Flex. Our selection makes it easier for our clients to find the perfect home.

Enter Tye Signature! Perhaps you have explored our selection of home lines and haven't found your dream home. That's okay, our in-house design team will work through your vision to see your dream home fulfilled. From building site to window finishes your house is customized to fit your needs, your style and your location.

Tye Signature is the upper echelon of home building in British Columbia; Each Signature home is completely unique to the client. We understand that inspiration comes in many ways, lets look at some examples. In the following pages Tye Signature Homes are laid out for you to really dive into the process, see the quality of our work and get inspired.

We hope you enjoy and we're excited about working with you.



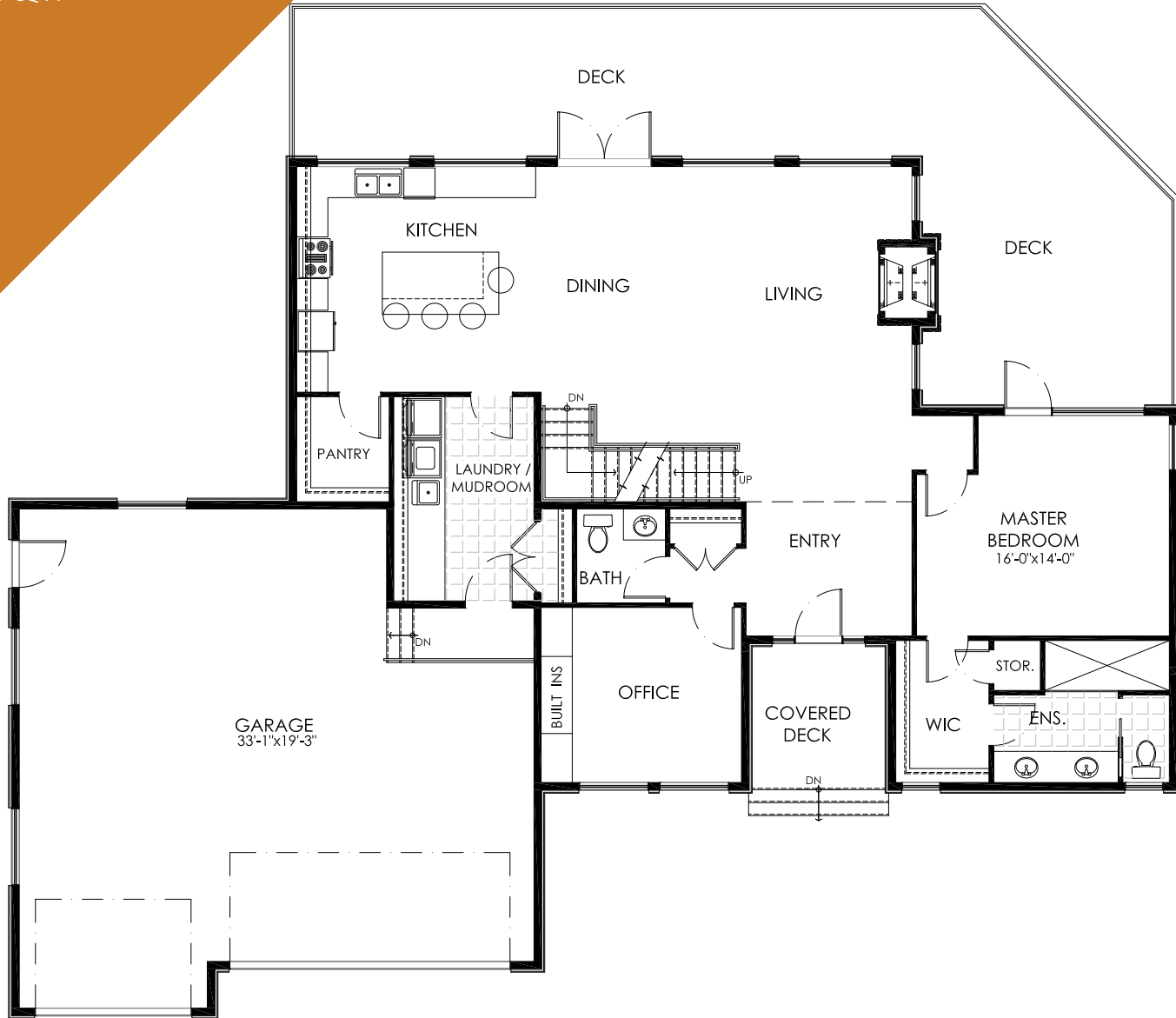


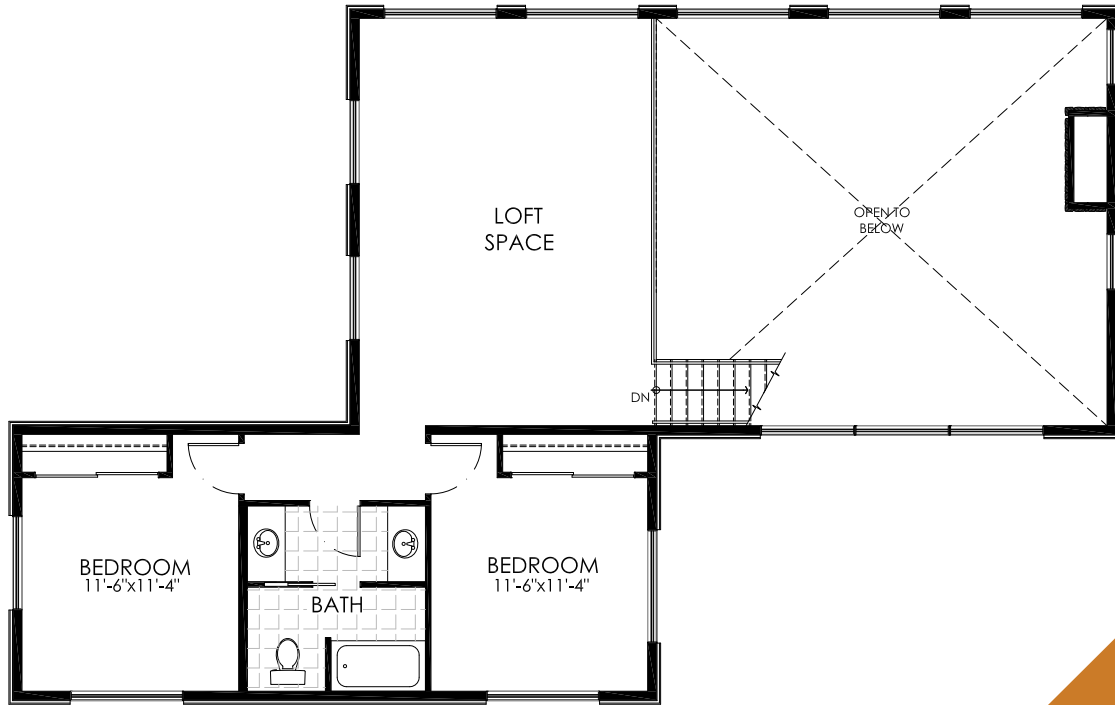
# The Rosa

2,586 SQ FT, 3 BED, 3 BATH  
Basement Plan Available

# Main Floor Plan

1,736 SQ FT





# Loft Floor Plan

850 SQ FT







# The Augusta

2,120 SQ FT, 2 BED, 3 BATH  
 BASEMENT PLAN AVAILABLE



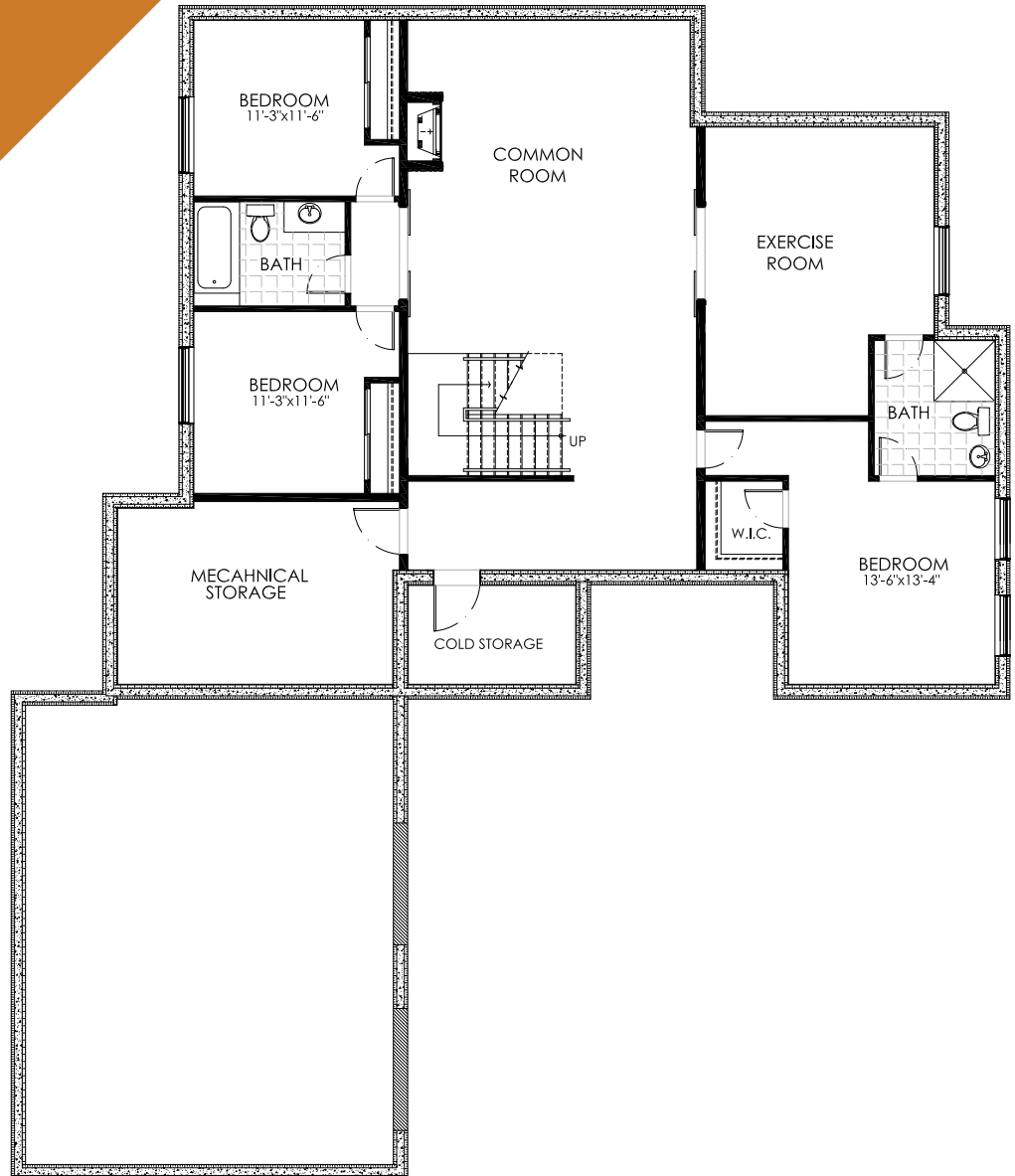
# The Pine Valley

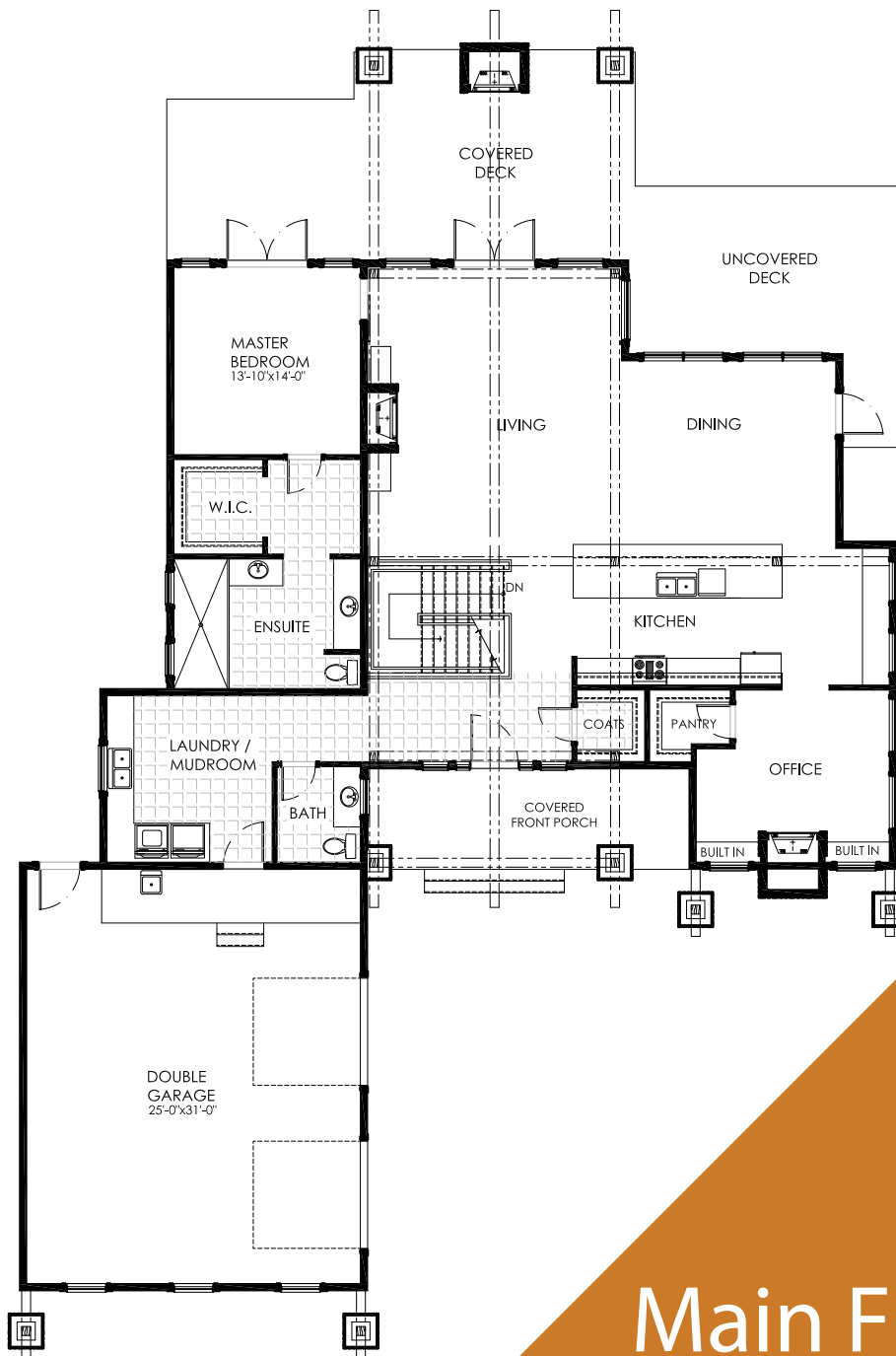
2,161 SQ FT, 1 BED, 2 BATH



# Basement Floor Plan

2,161 SQ FT, 3 BED, 2 BATH



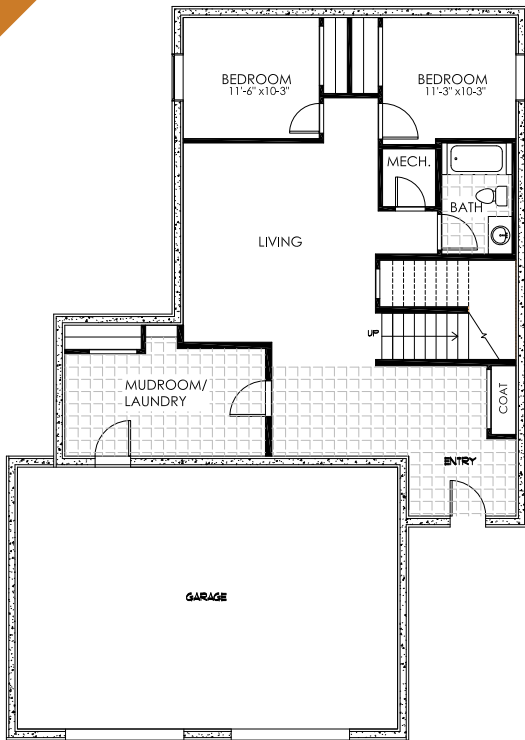


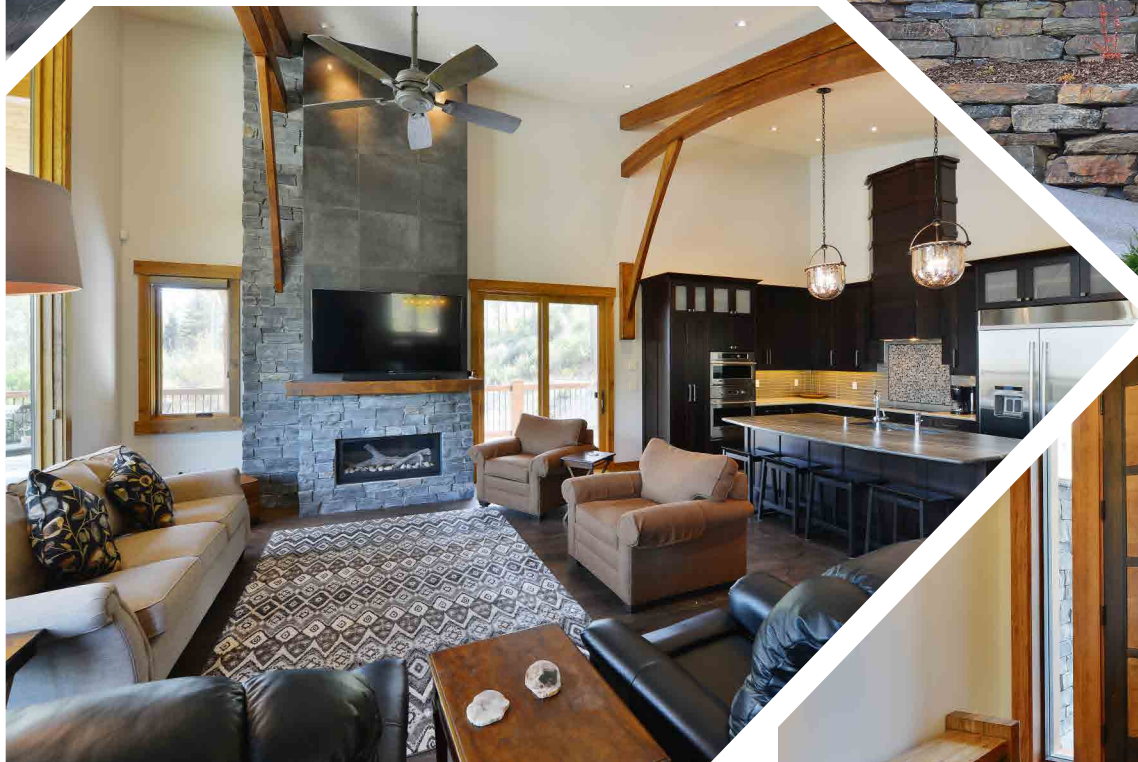
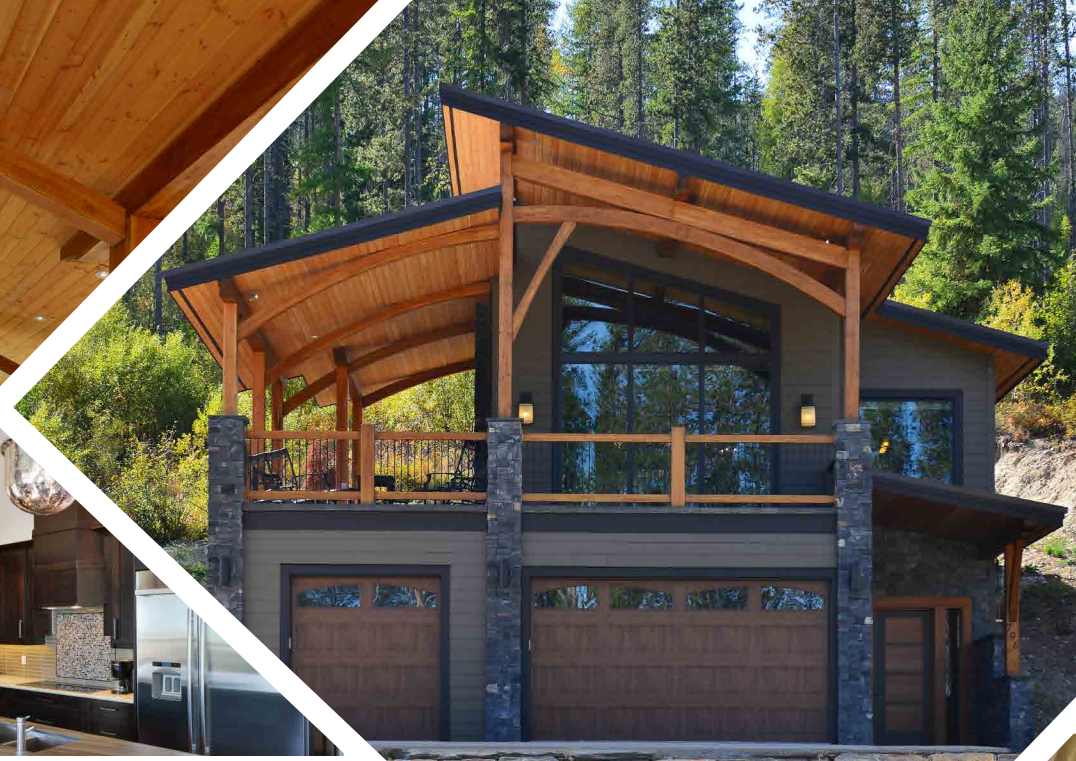
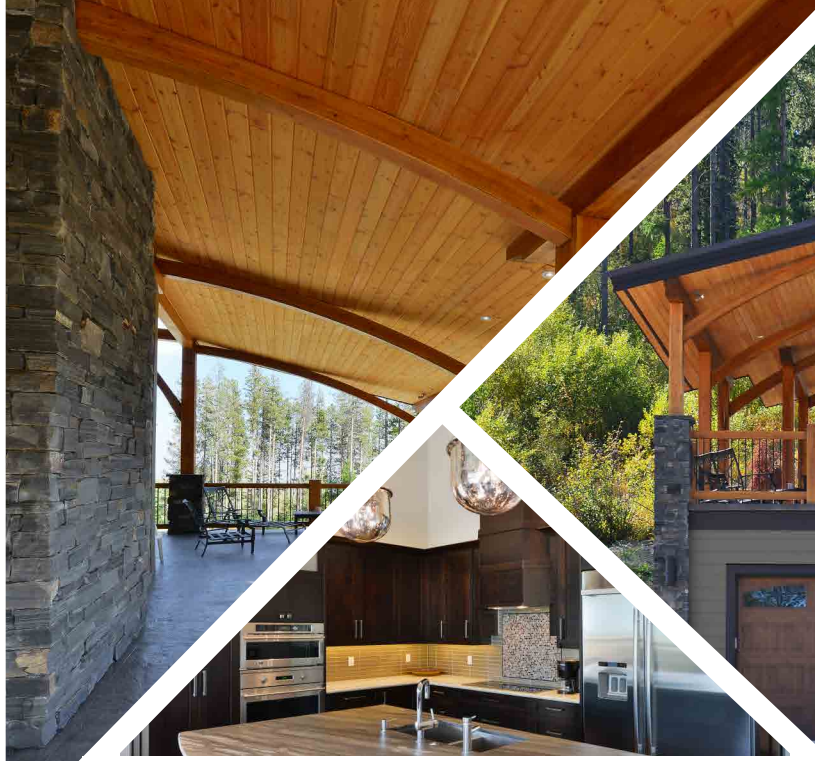
# Main Floor Plan

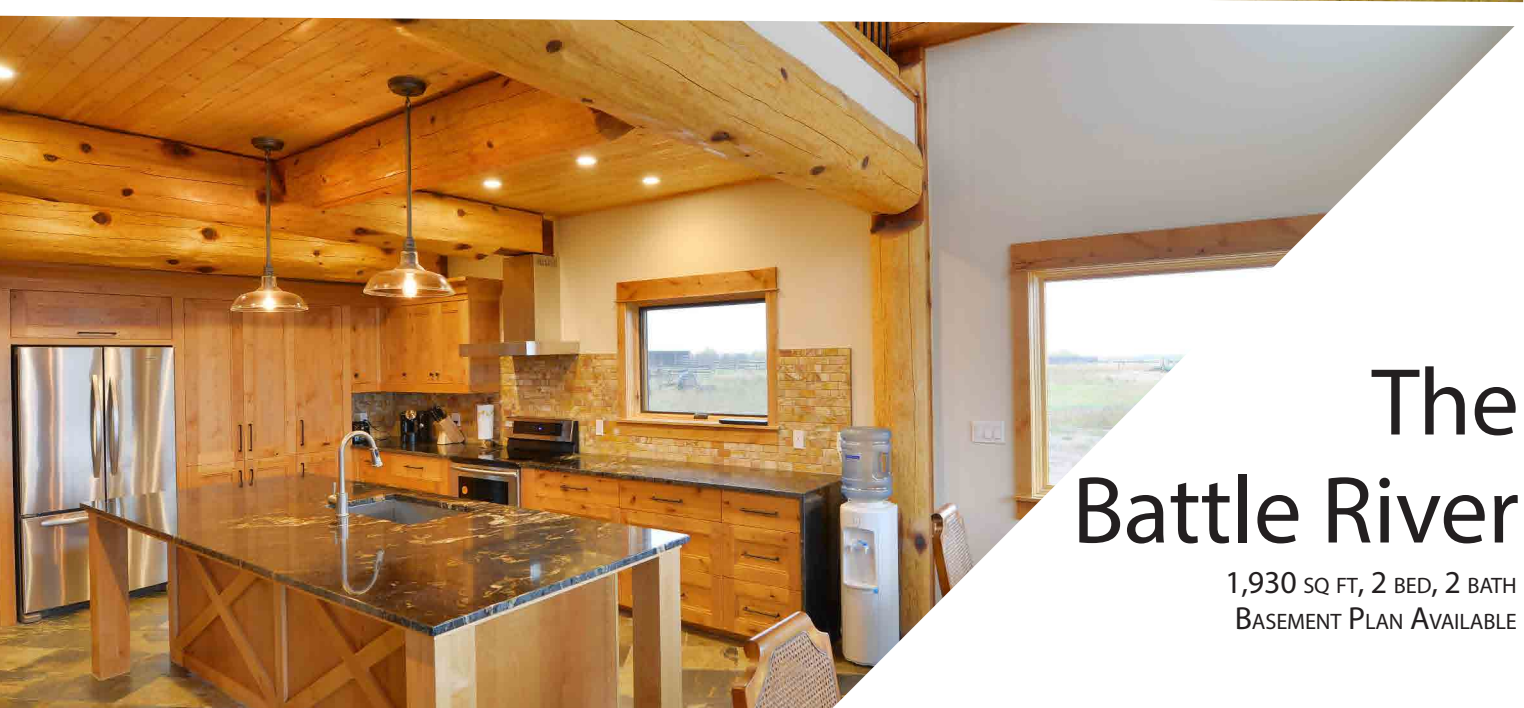
2,161 SQ FT, 1 BED, 2 BATH

# The Merion

1,420 SQ FT, 3 BED, 3 BATH







# The Battle River

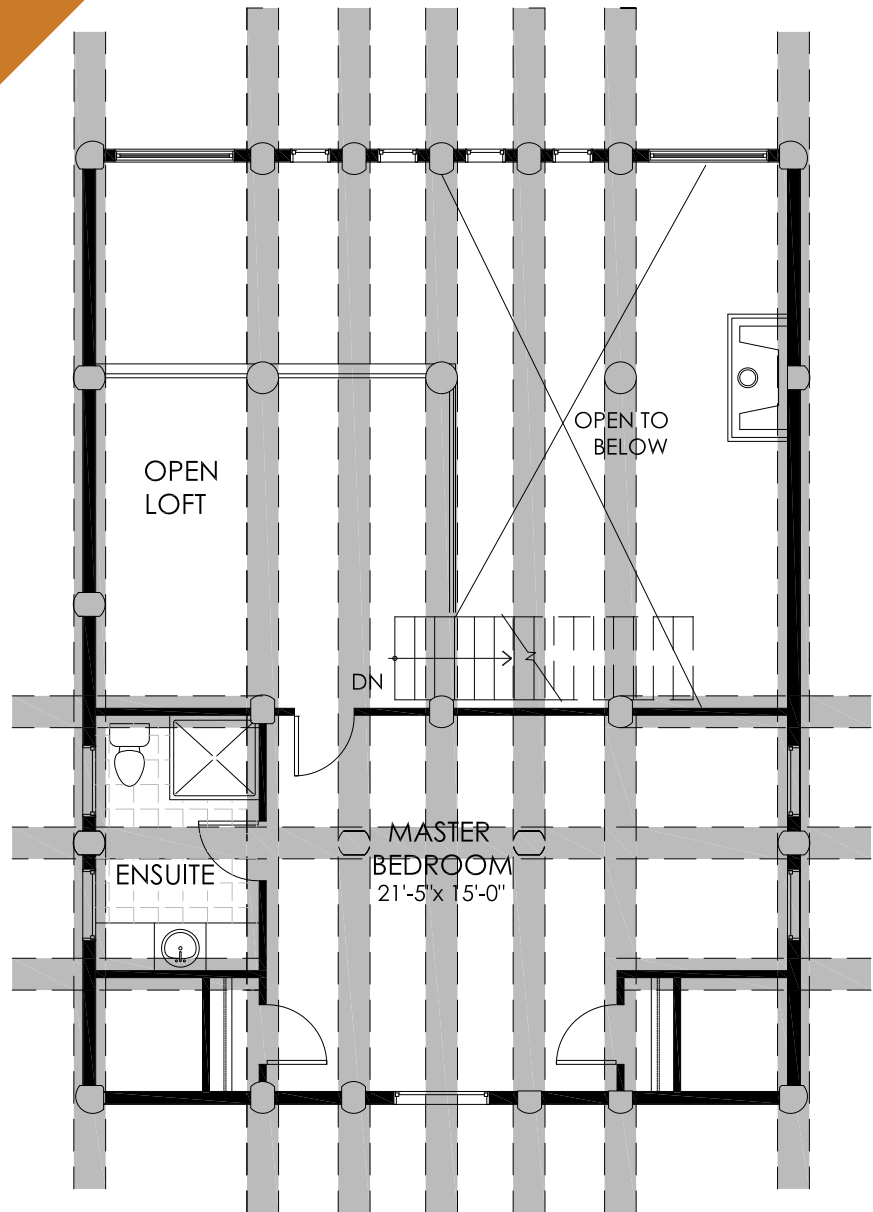
1,930 SQ FT, 2 BED, 2 BATH  
BASEMENT PLAN AVAILABLE

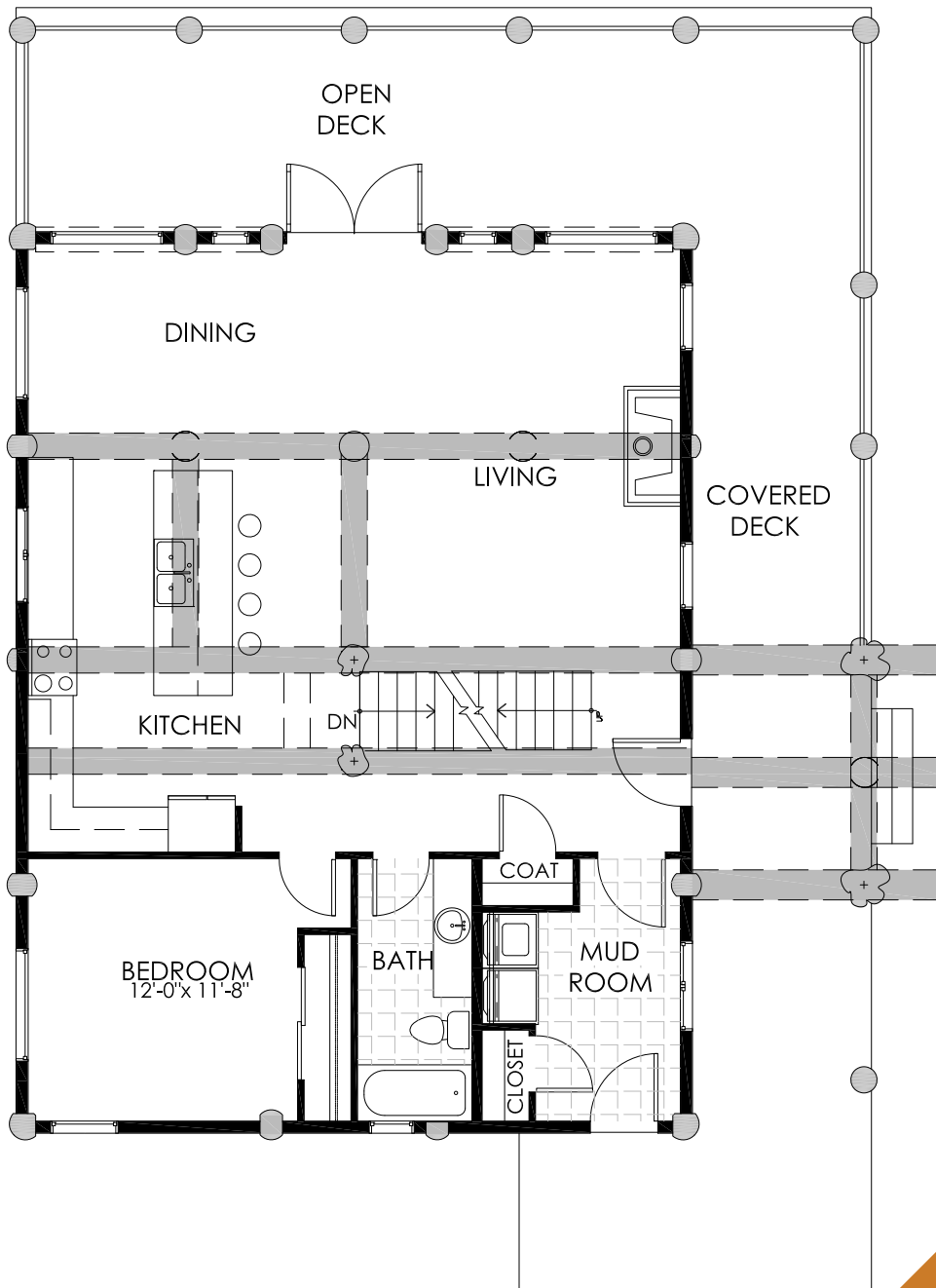




# Loft Floor

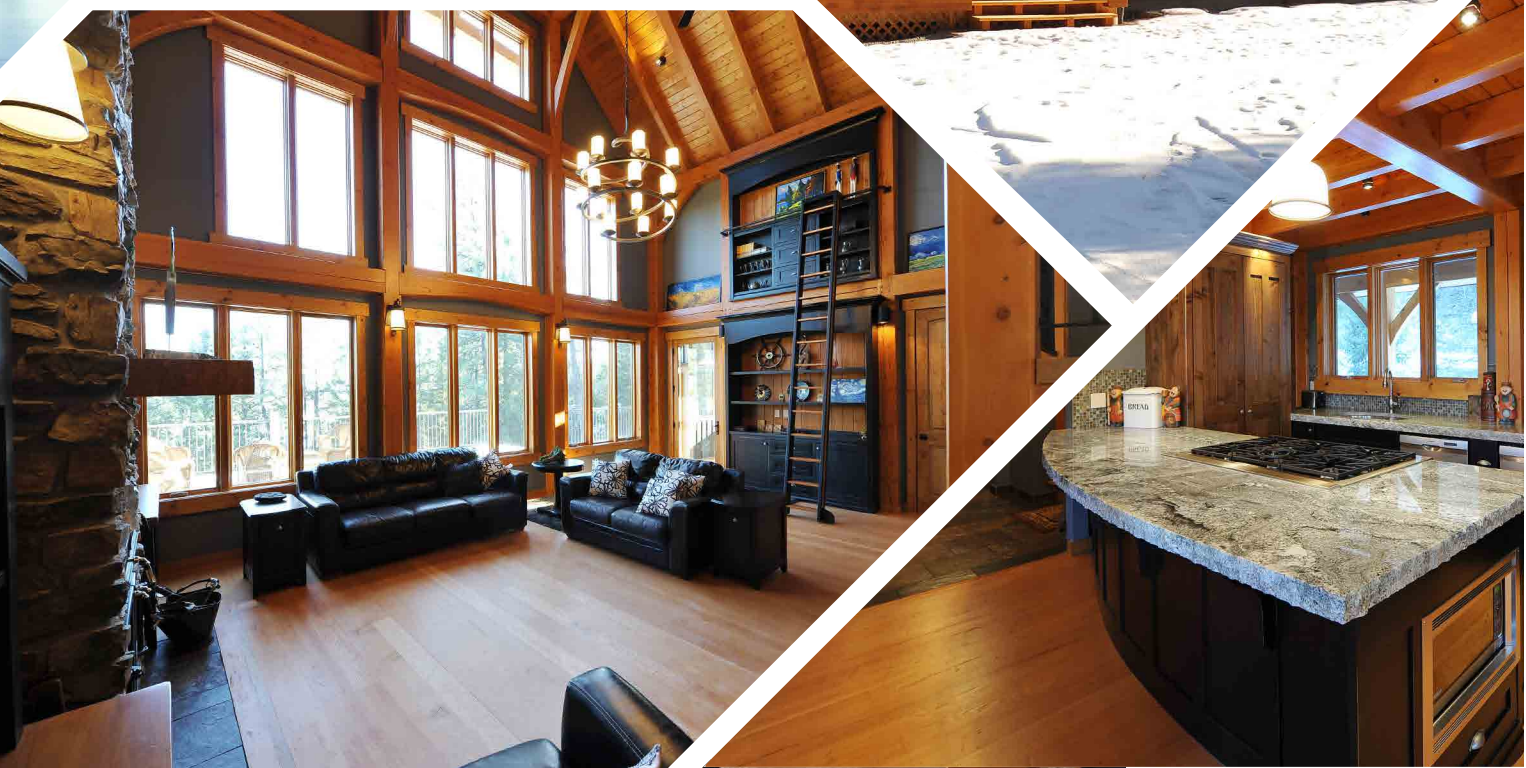
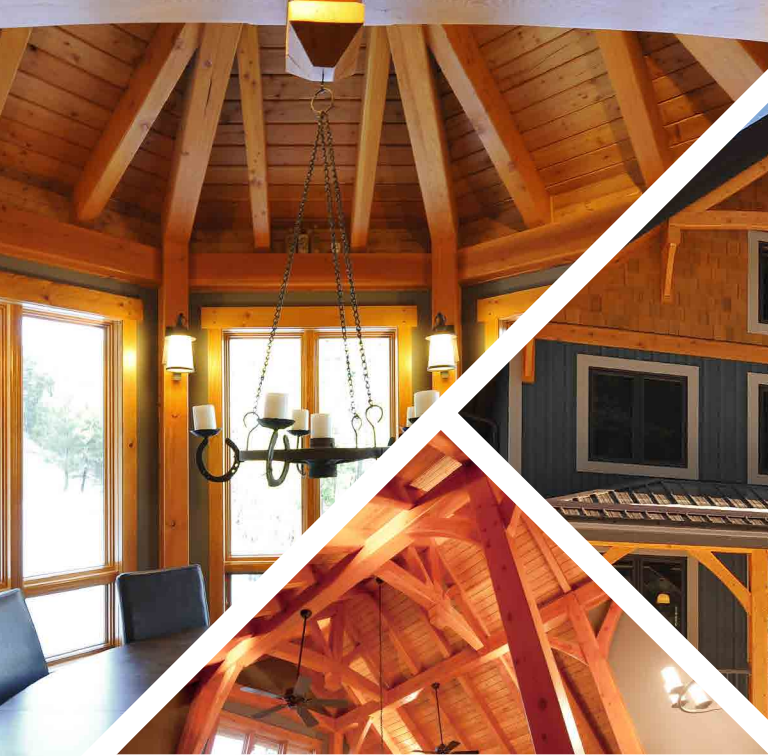
725 SQ FT, 1 BED, 1 BATH

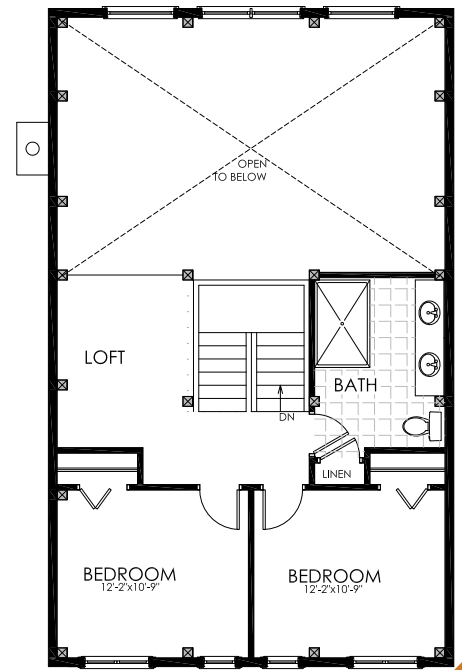
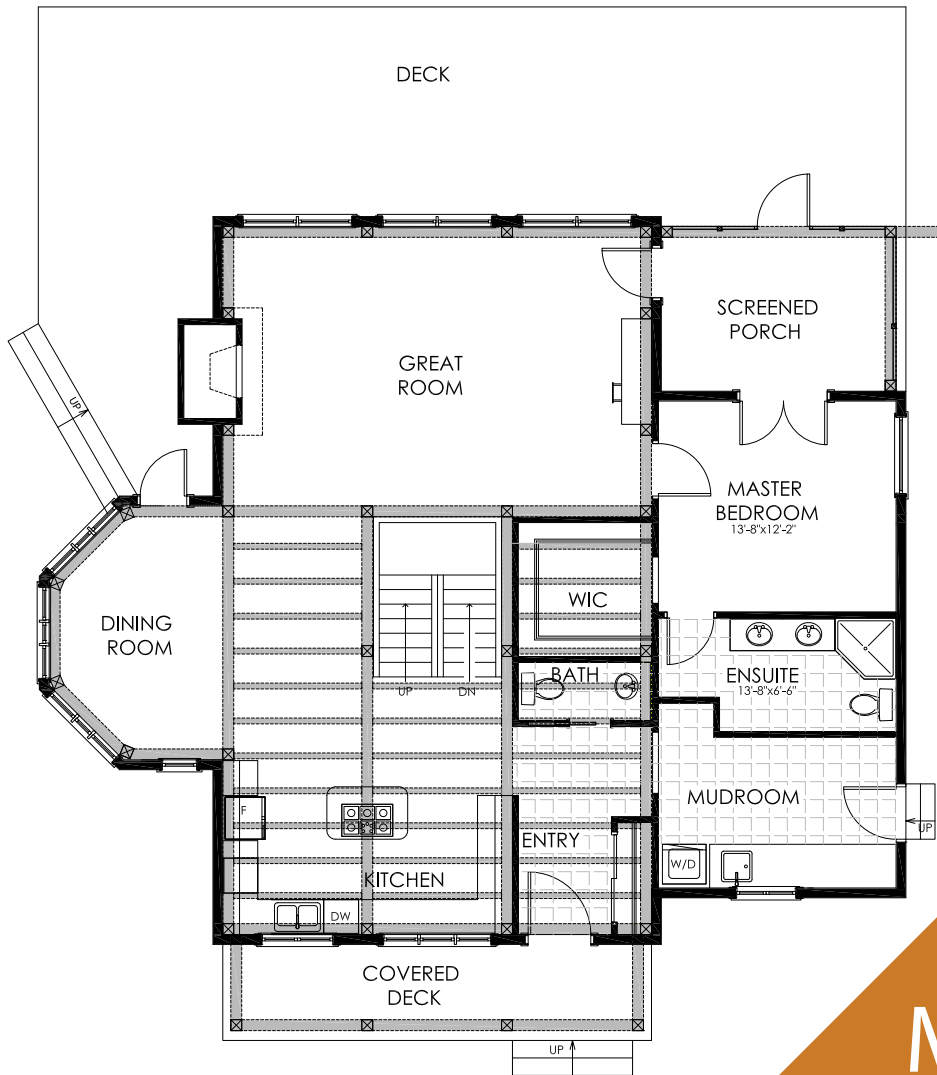




# Main Floor

1,205 SQ FT, 1 BED, 1 BATH



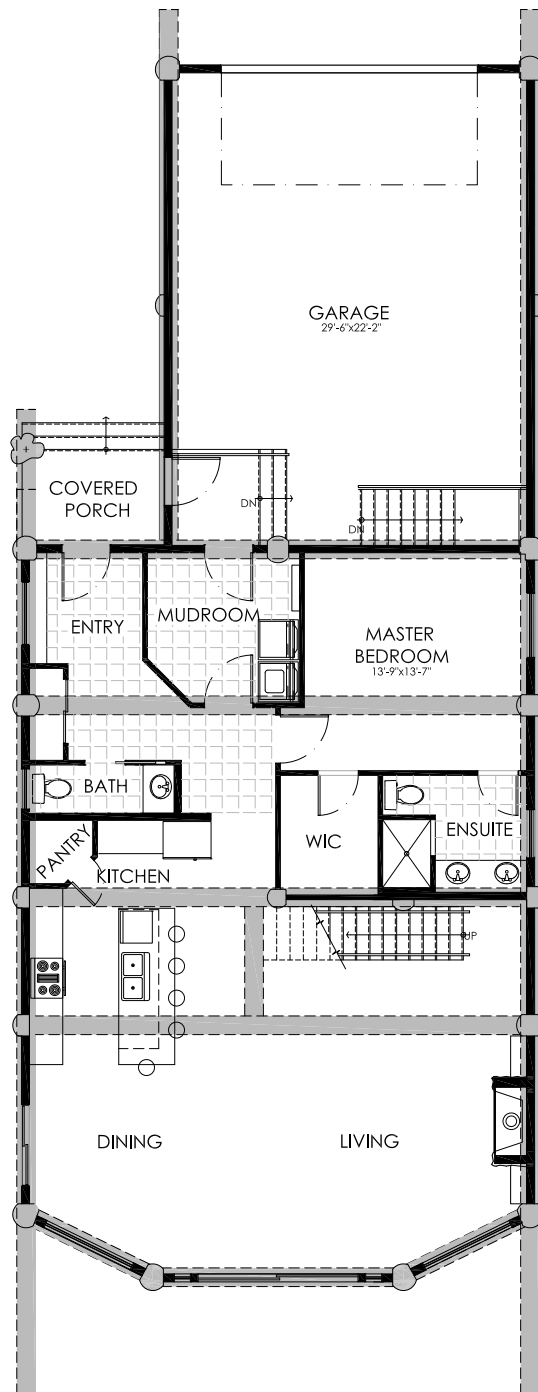
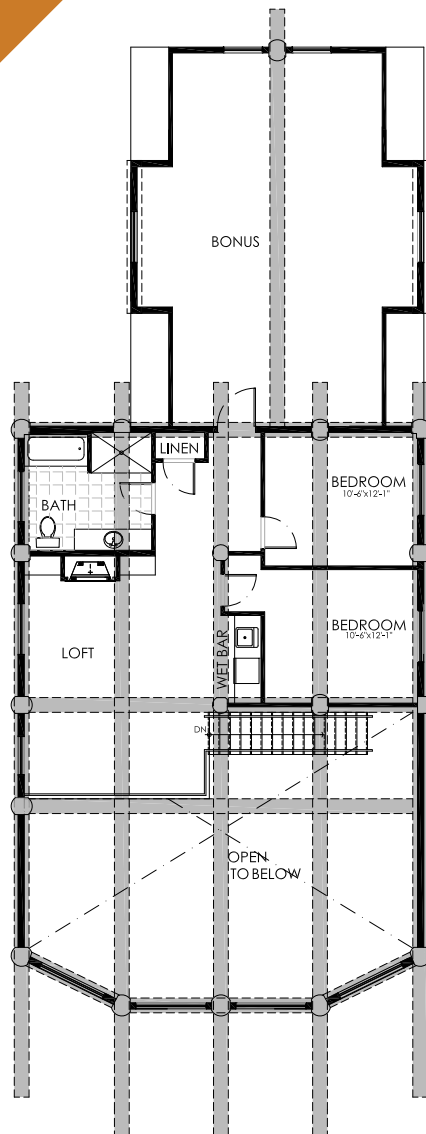


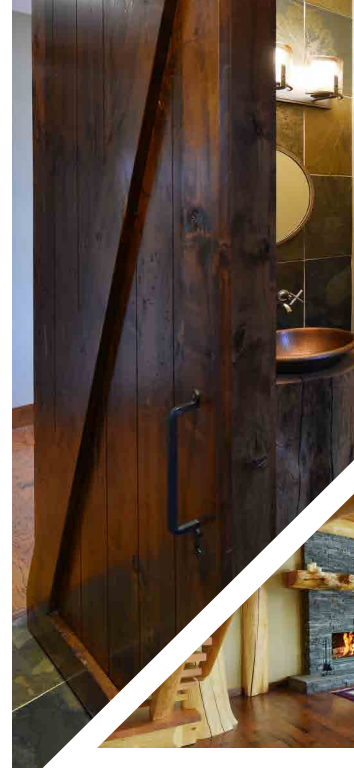
# The Mountain Ash

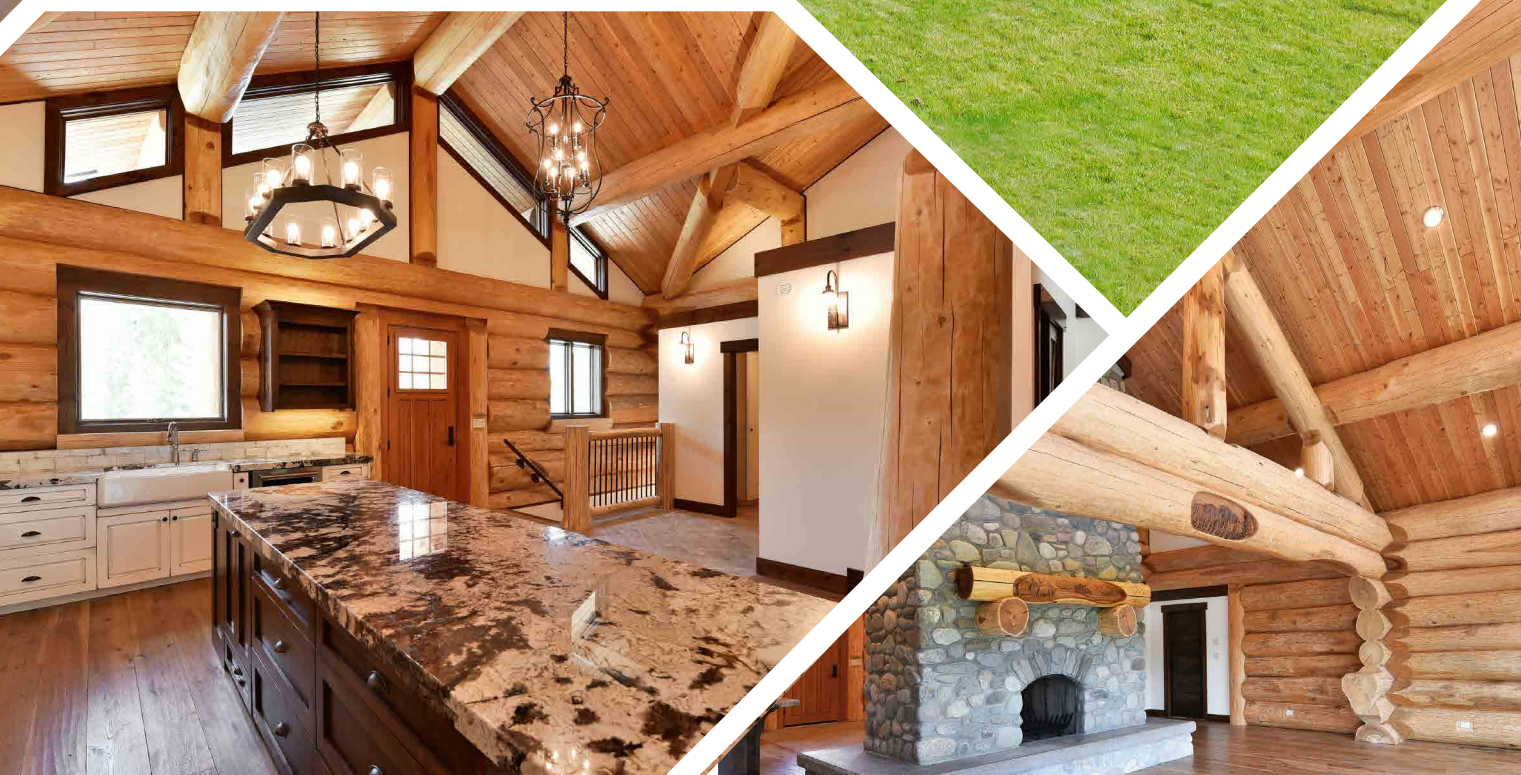
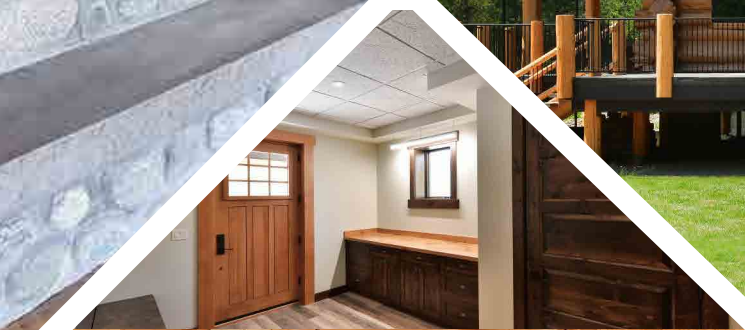
2,125 SQ FT, 3 BED, 3 BATH  
BASEMENT PLAN AVAILABLE

# The Wigwam

2,739 SQ FT, 3 BED, 3 BATH  
BASEMENT PLAN AVAILABLE



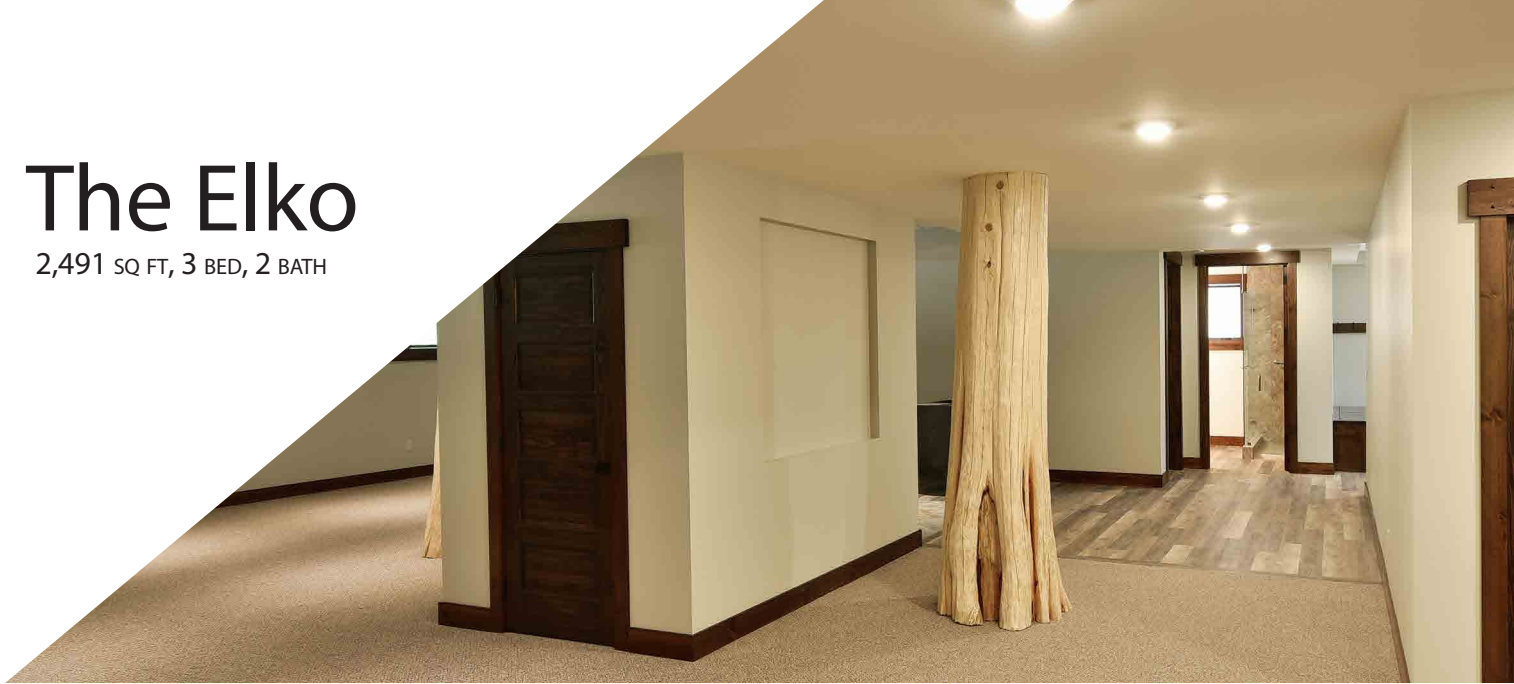






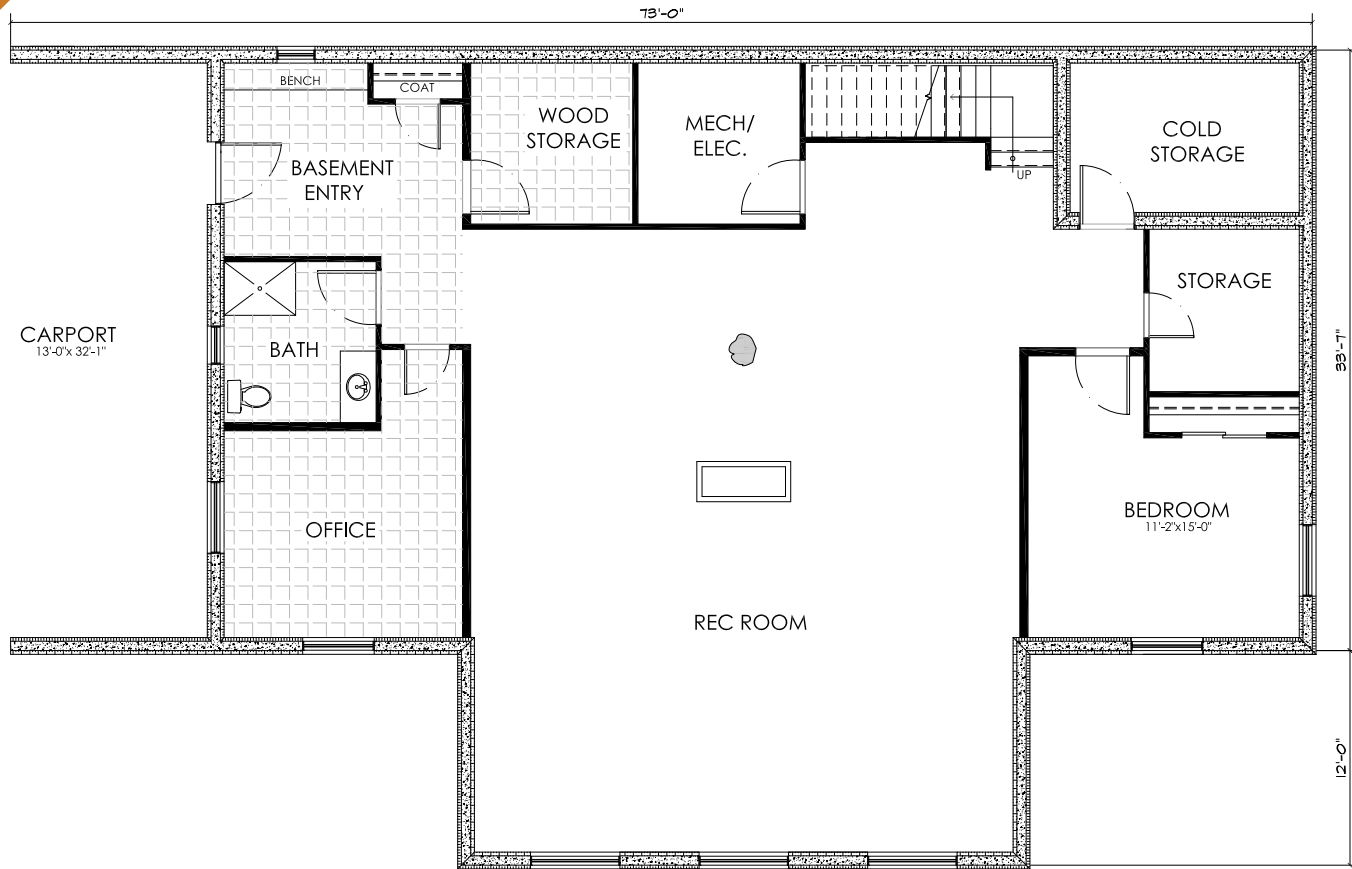
# The Elko

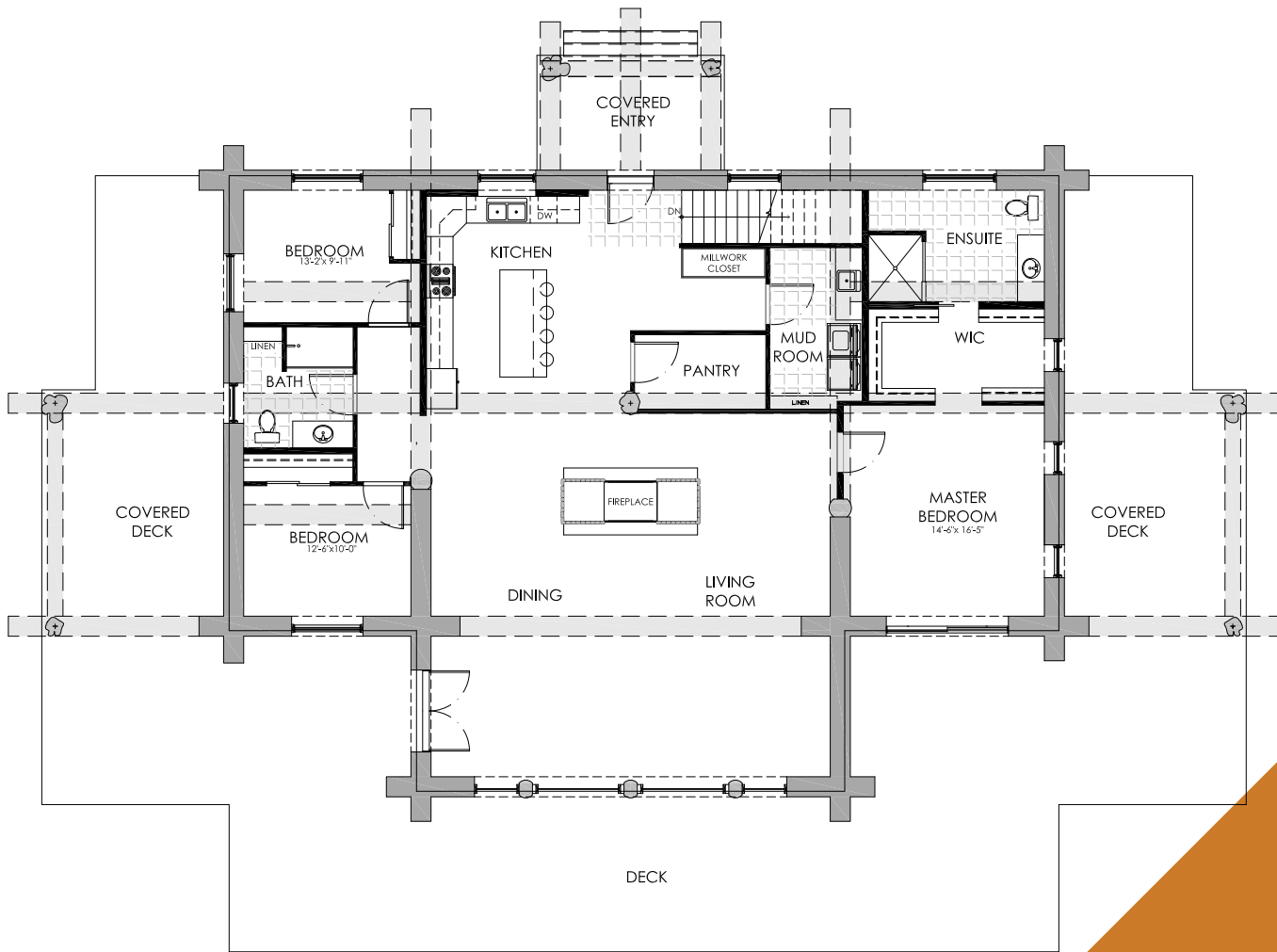
2,491 SQ FT, 3 BED, 2 BATH



# Basement Floor

2,491 SQ FT, 1 BED, 1 BATH





# Main Floor

2,491 SQ FT, 3 BED, 2 BATH

